



**EANES ISD**  
AUSTIN, TEXAS

---

# Bond Project Updates

---

HCMS Fine Arts

WRMS Fine Arts

BCE Playground

January 26, 2016

# *The Work.*



Hill Country  
Middle School  
Fine Arts Addition

01

West Ridge  
Middle School  
Fine Arts Addition

02

Barton Creek  
Elementary  
New Playground

03



# *Fine Arts Additions.*

01

Project Location: Hill Country Middle School  
West Ridge Middle School

Estimated Completion Date: Winter 2016

Funding Source: 2015 Bond Funds

- 01 8/27/15: Kick-off/site meeting with Bob Cervi and Don Sansom
- 02 11/5/15: First meeting with focus groups from WRMS, HCMS, and Kerry Taylor
- 03 12/18/15: Meeting with WRMS focus group
- 04 1/13/16: Meeting with HCMS focus group
- 05 By 1/31/16: Finalize design with focus groups
- 06 4/26/16: Award Contracts
- 07 5/16: Begin Construction
- 08 12/31/16: Estimated Completion



# Fine Arts Additions.



## Area Size Comparison

	Hill Country Middle School	West Ridge Middle School
	Fine Arts Area	Fine Arts Area
Existing Square Footage	9,670	8,545
Addition Square Footage	1,820	2,895
<b>Total Square Footage</b>	<b>11,490</b>	<b>11,440</b>

## Program Enrollment Comparison

Program	Hill Country Middle School			West Ridge Middle School		
	Sections	# of Students	Avg. Class Size	Sections	# of Students	Avg. Class Size
Band	10	209	20.9	12	246	20.5
Choir	12	265	22.1	12	364	30.3
Drama	7	222	31.7	3	54	18.0
Orchestra	5	128	25.6	6	185	30.8
<b>Total Fine Arts Enrollment</b>		<b>824</b>			<b>849</b>	
<b>Total Campus Enrollment</b>		<b>1055</b>			<b>943</b>	

\* Middle School Student Enrollment as of October 30, 2015



# *Fine Arts Addition.*

01

## Hill Country Middle School

### 01 Focus Group:

Sean Connor (Pfluger & Assoc.)  
Heidi Holsinger (Pfluger & Assoc.)  
Kathleen Sullivan (Principal)  
Felix Grimmert (Assistant Principal)  
Kerry Taylor (Director of Bands)  
Katy Bratton (Choir)  
Pam Friday (Theater Arts)  
Jeremy Trimble (M&O)  
Brandon Cardwell (M&O)

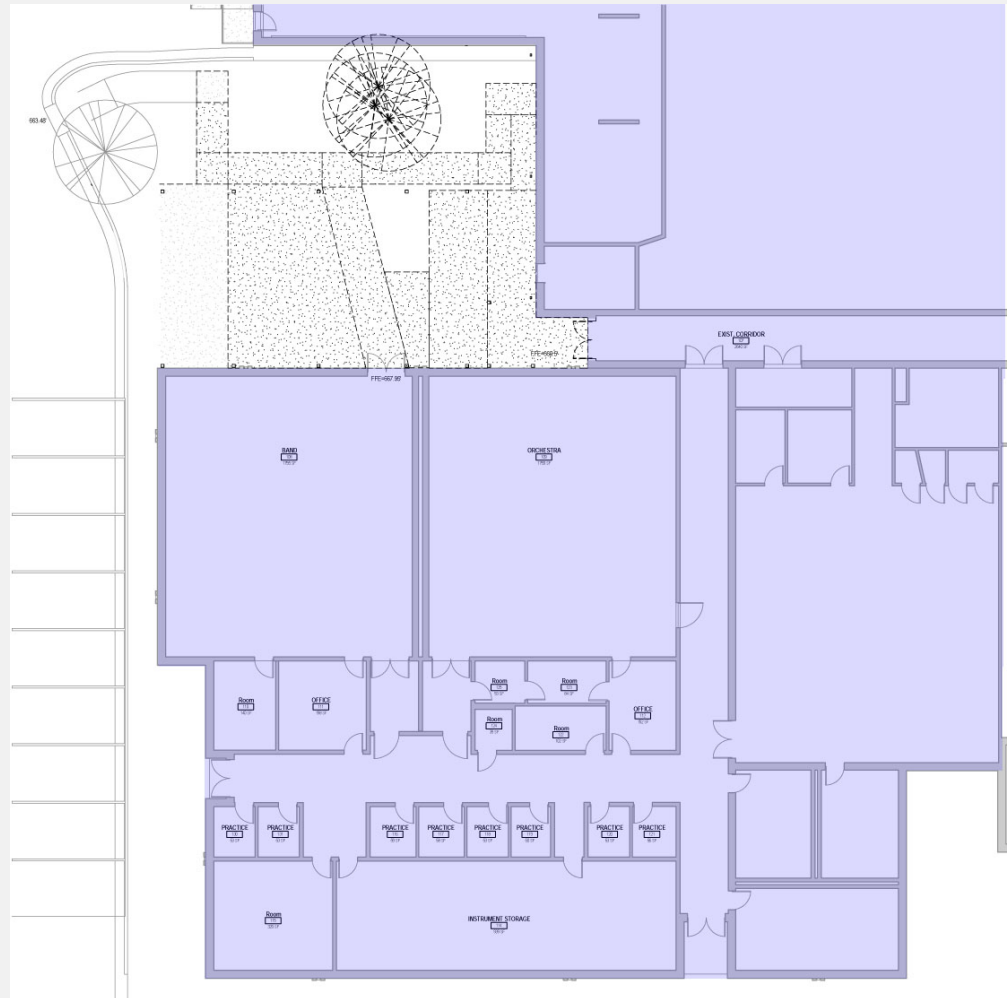
# *Fine Arts Addition.*



Hill Country Middle School

01

Existing Conditions



# *Fine Arts Addition.*



Hill Country Middle School

01  
New Conditions

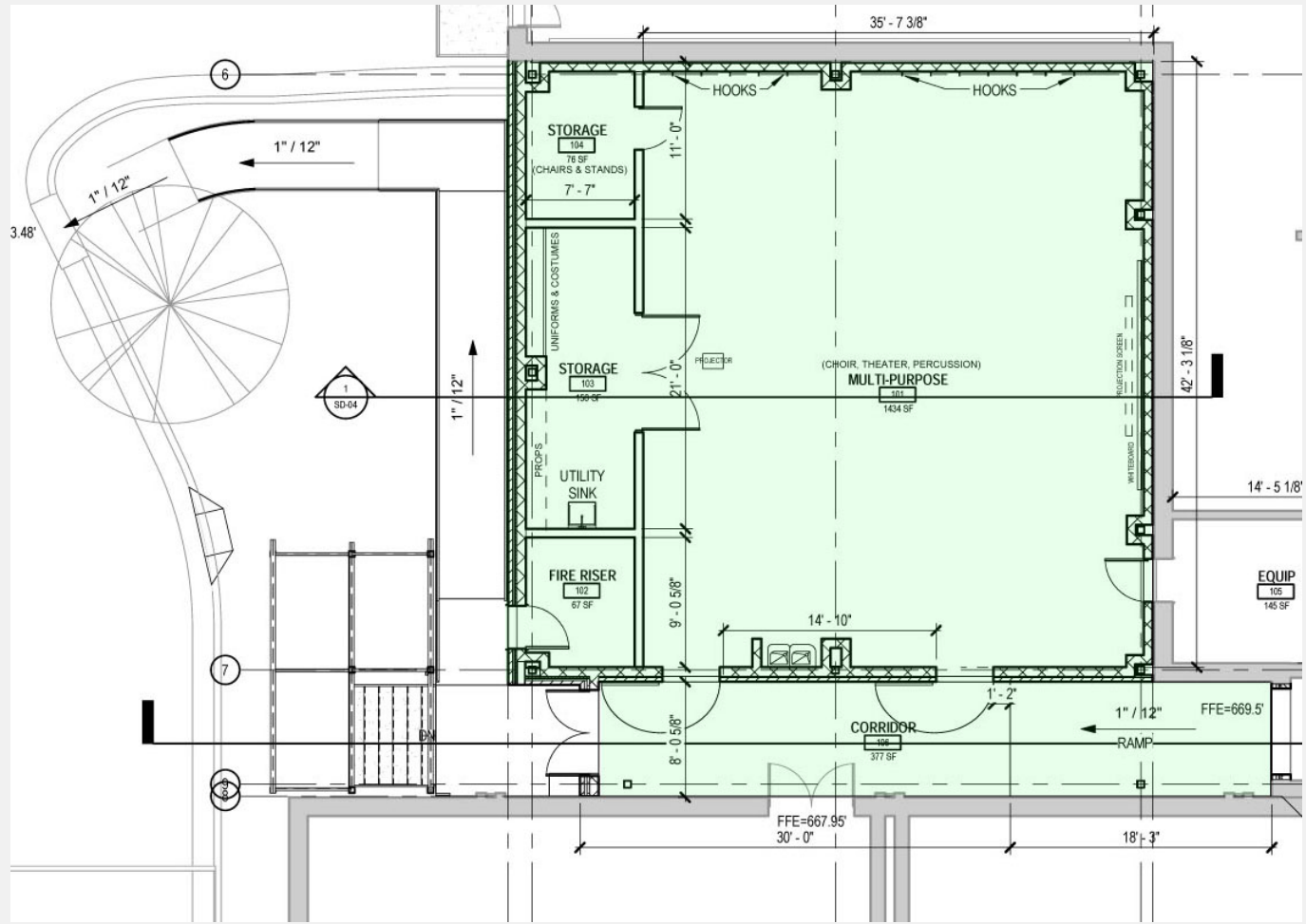


# Fine Arts Addition.



## Hill Country Middle School

01  
New Conditions





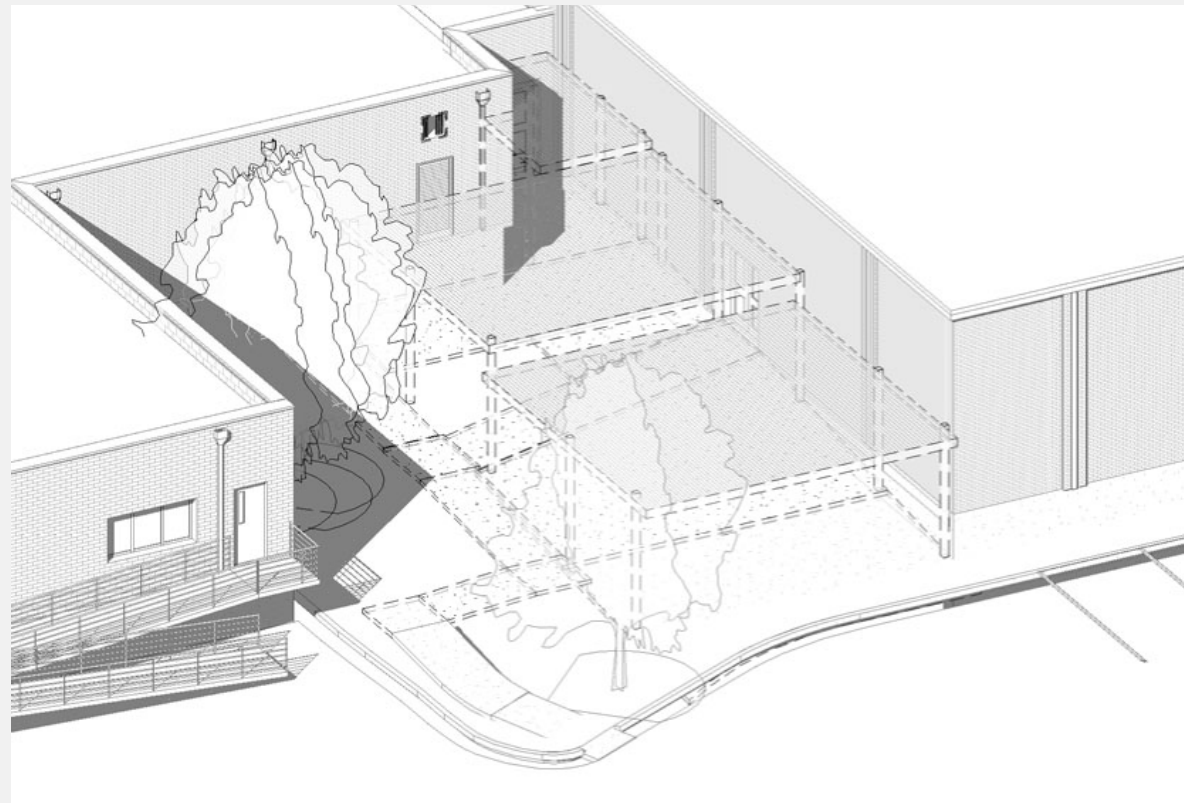
# *Fine Arts Addition.*



Hill Country Middle School

01

Existing Conditions



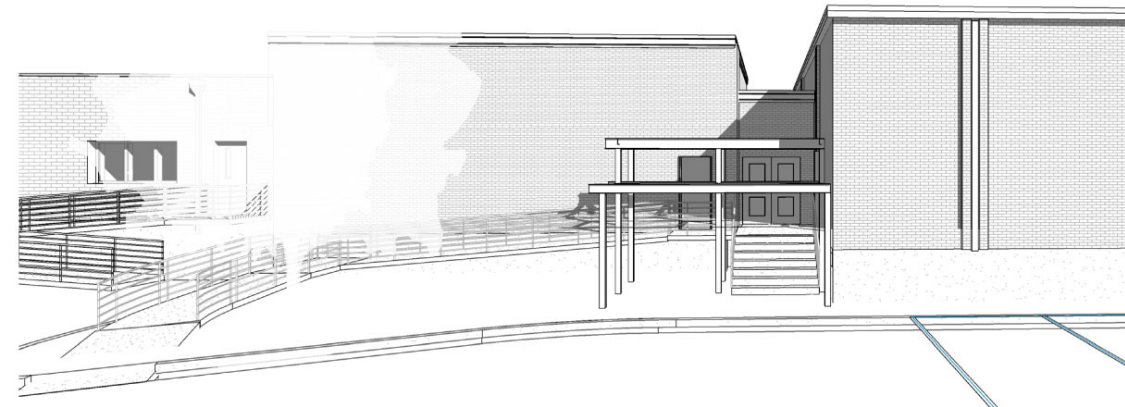
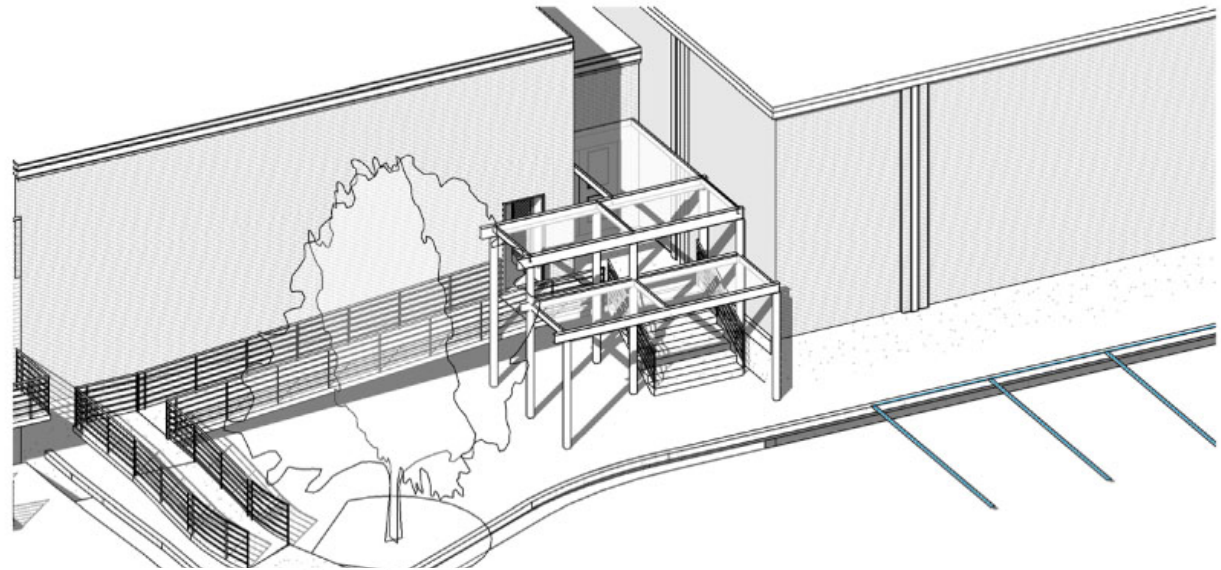
# *Fine Arts Addition.*



Hill Country Middle School

01

New Conditions

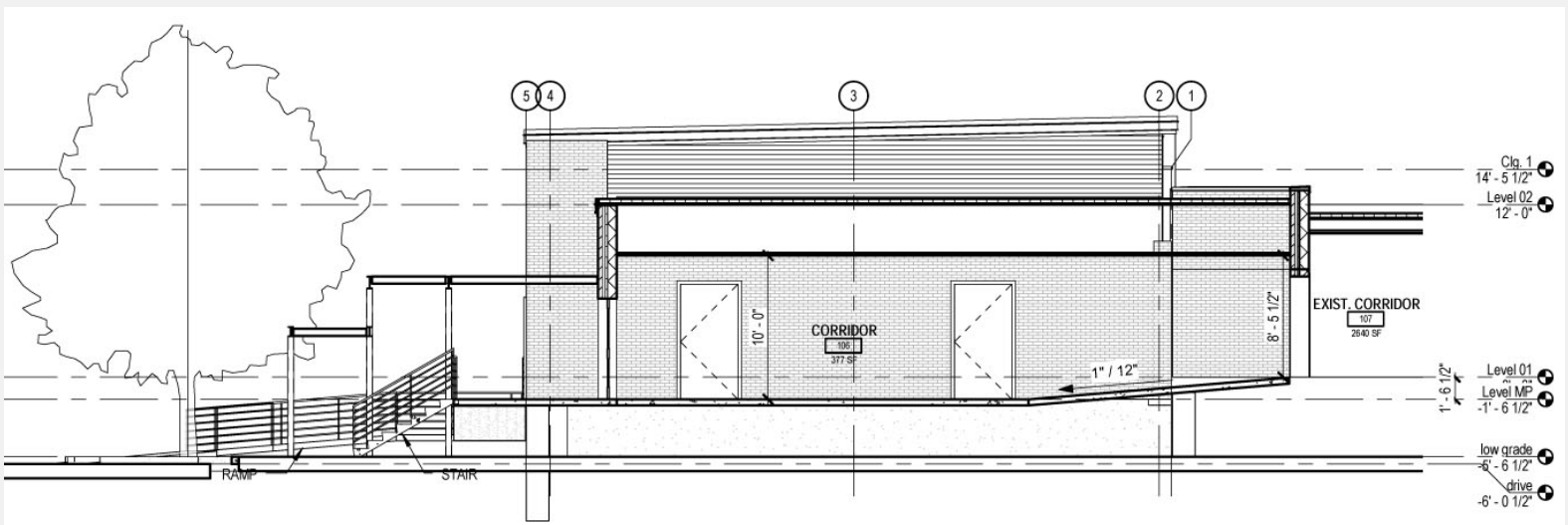
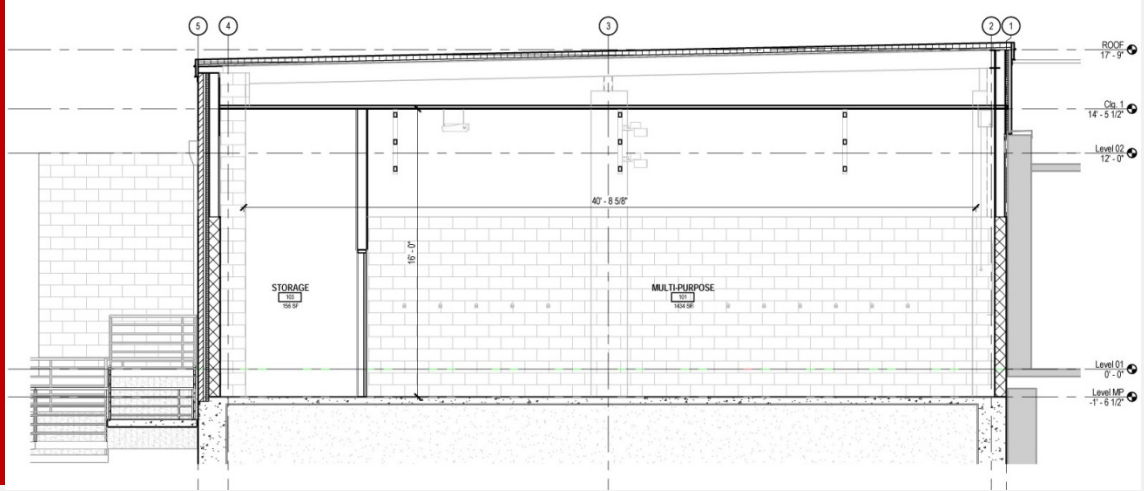


# Fine Arts Addition.



## Hill Country Middle School

01





# *Fine Arts Addition.*

02

## West Ridge Middle School

### 01 Focus Group:

Sean Connor (Pfluger & Assoc.)  
Heidi Holsinger (Pfluger & Assoc.)  
Steve Ramsey (Principal)  
Kerry Taylor (Director of Bands)  
Andrea Snouffer (Choir)  
Elizabeth Compton (Orchestra)  
Susan Glover (Band)  
Jeremy Trimble (M&O)  
Brandon Cardwell (M&O)

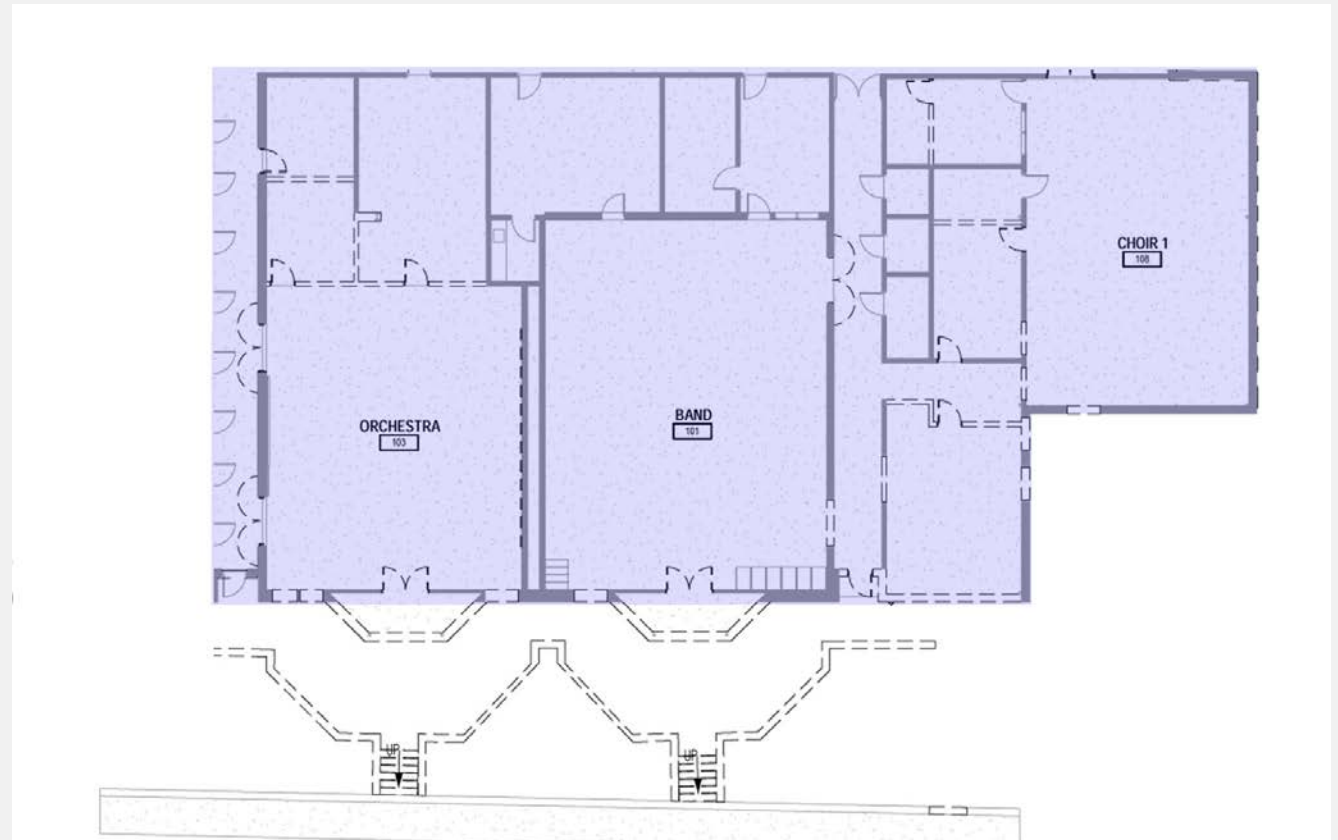
# *Fine Arts Addition.*



West Ridge Middle School

02

Existing Conditions



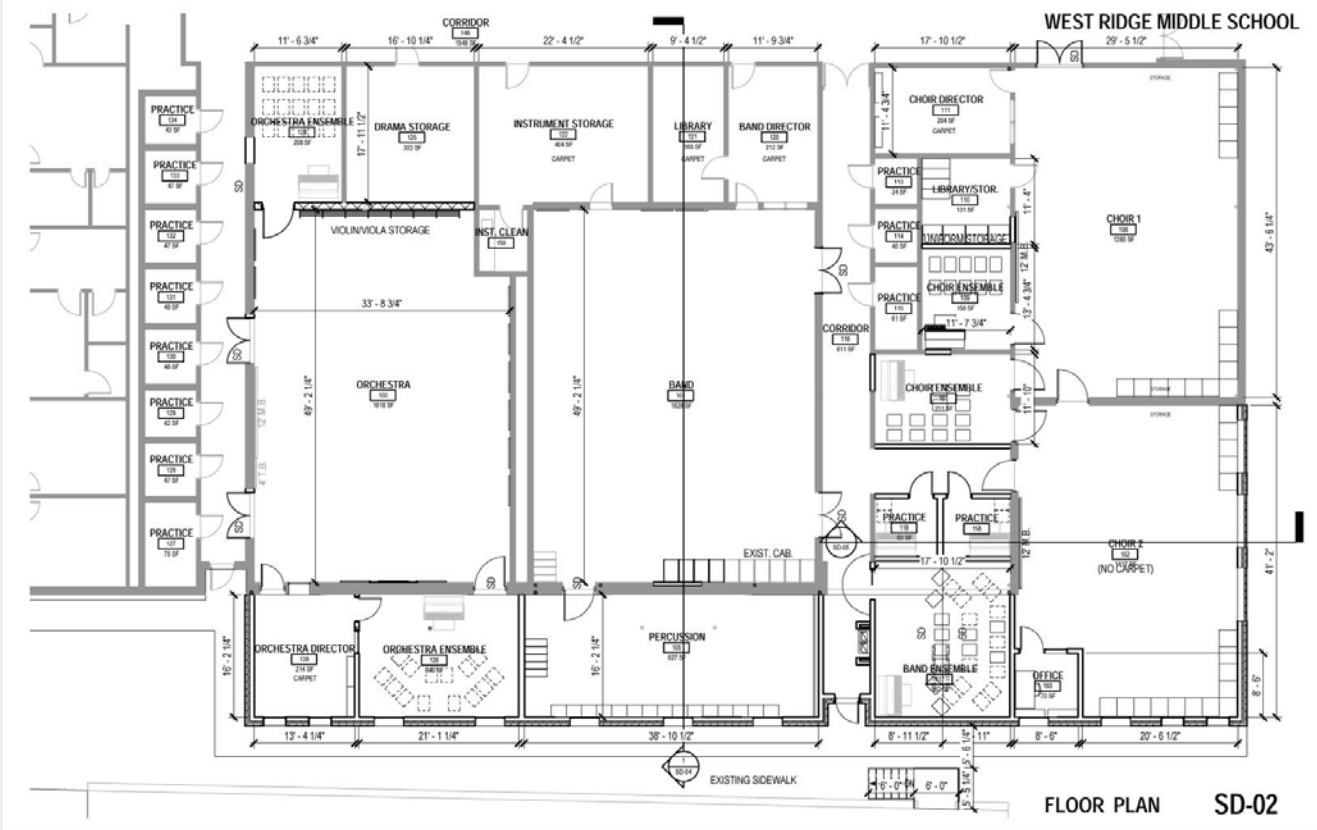


# Fine Arts Addition.



## West Ridge Middle School

02  
New Conditions



FLOOR PLAN SD-02

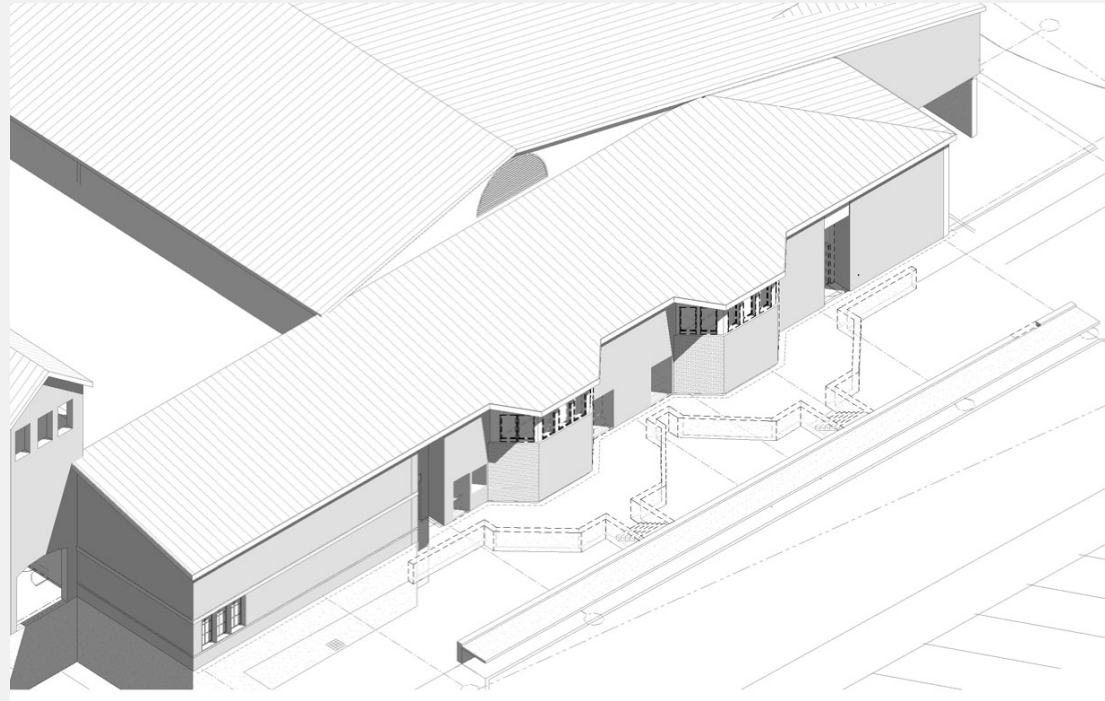
# *Fine Arts Addition.*



West Ridge Middle School

02

Existing Conditions





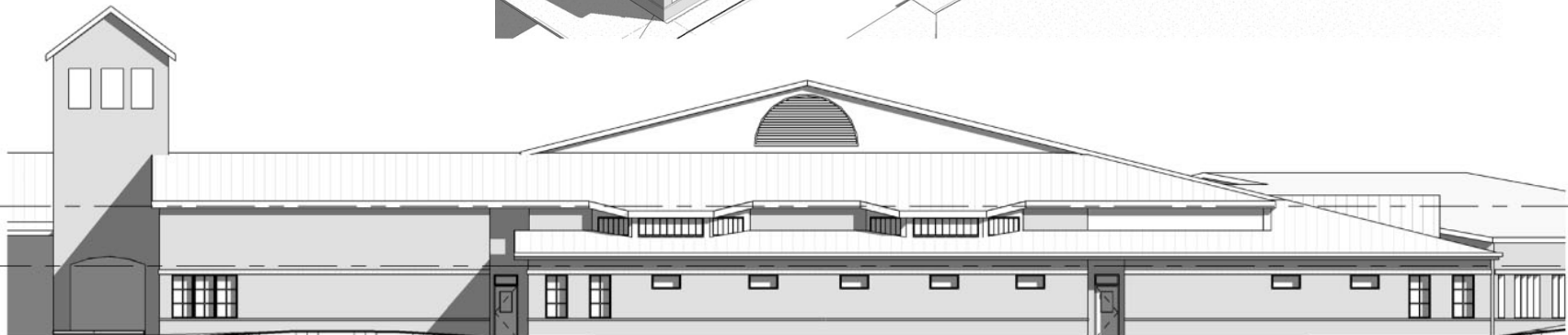
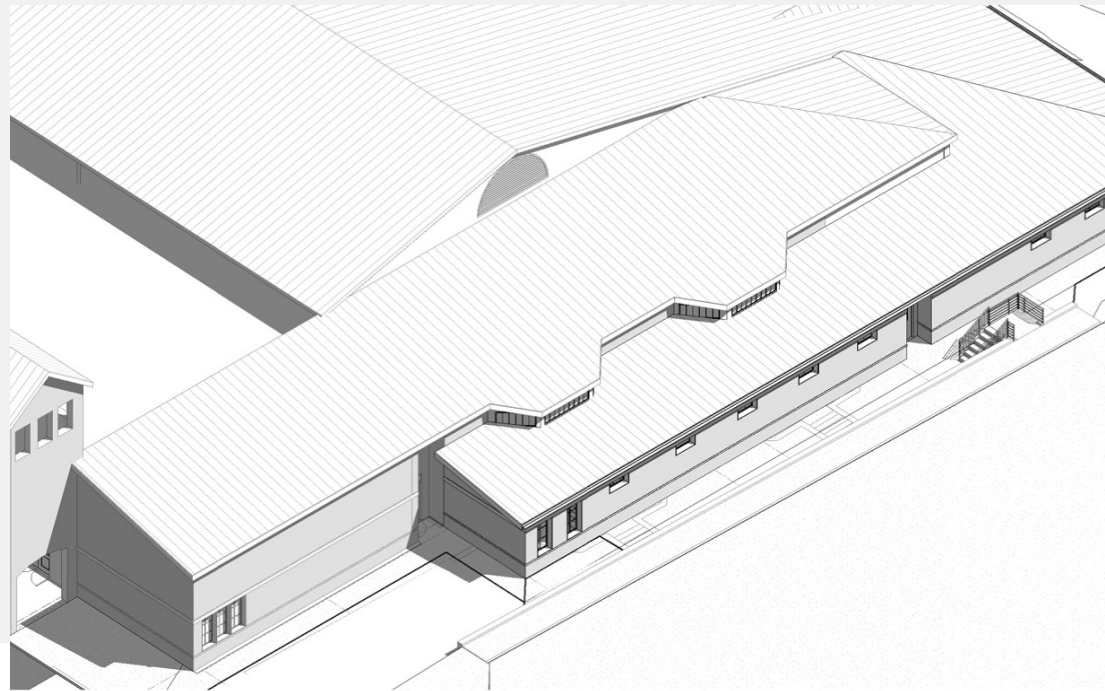
# *Fine Arts Addition.*



West Ridge Middle School

02

New Conditions



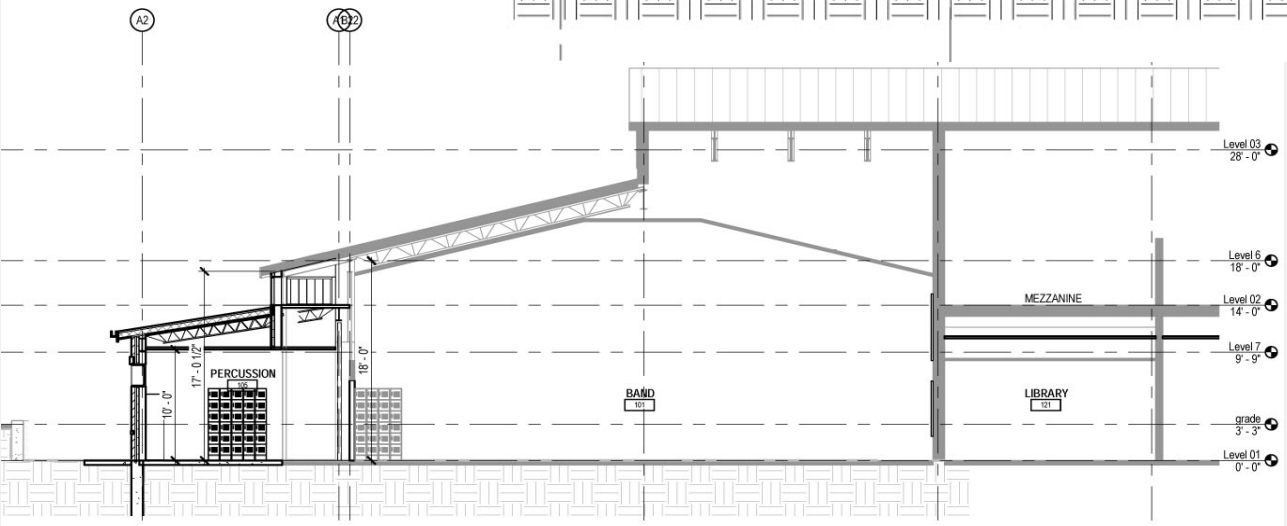
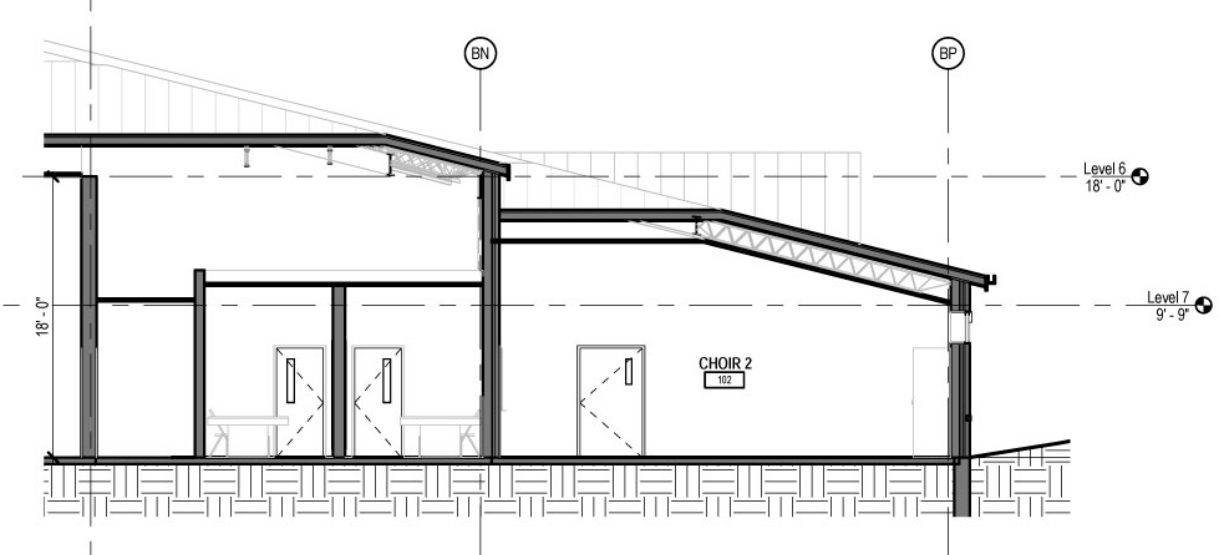
Level 6  
18' - 0"

Level 7  
9' - 9"

# Fine Arts Addition.



## West Ridge Middle School







# *New Playground.*

Project Location: Barton Creek Elementary School

Estimated Completion Date: August 2016

Funding Source: 2011 Bond Funds

- 01 10/29/15: Kick-off/site meeting with focus group
- 02 11/9/15: Site visits to previously completed EISD Elementary playground projects
- 03 12/8/15: Meeting to finalize the vision for the new playground(s) and begin design
- 04 1/11/16: Review designs with focus group
- 05 1/25/16: Finalize design with focus group
- 06 By 3/31/16: Finalize Construction Drawings and pricing
- 07 4/16: Board Approval
- 08 6/16: Begin Construction
- 09 8/16: Estimated Completion

# *New Playground.*



Barton Creek Elementary School

03

## 01 Focus Group:

Jaime Beaman (Casa Bella Architects)  
James Robertson (Robertson Playgrounds)  
Bill Bechtol (EISD Administration)  
Bryan Shippey (Principal)  
John Linnell (PE)  
Courtney Rimkus (K Teacher)  
Rebecca Stover (4<sup>th</sup> Teacher)  
Caroline Kelner (Life Skills)

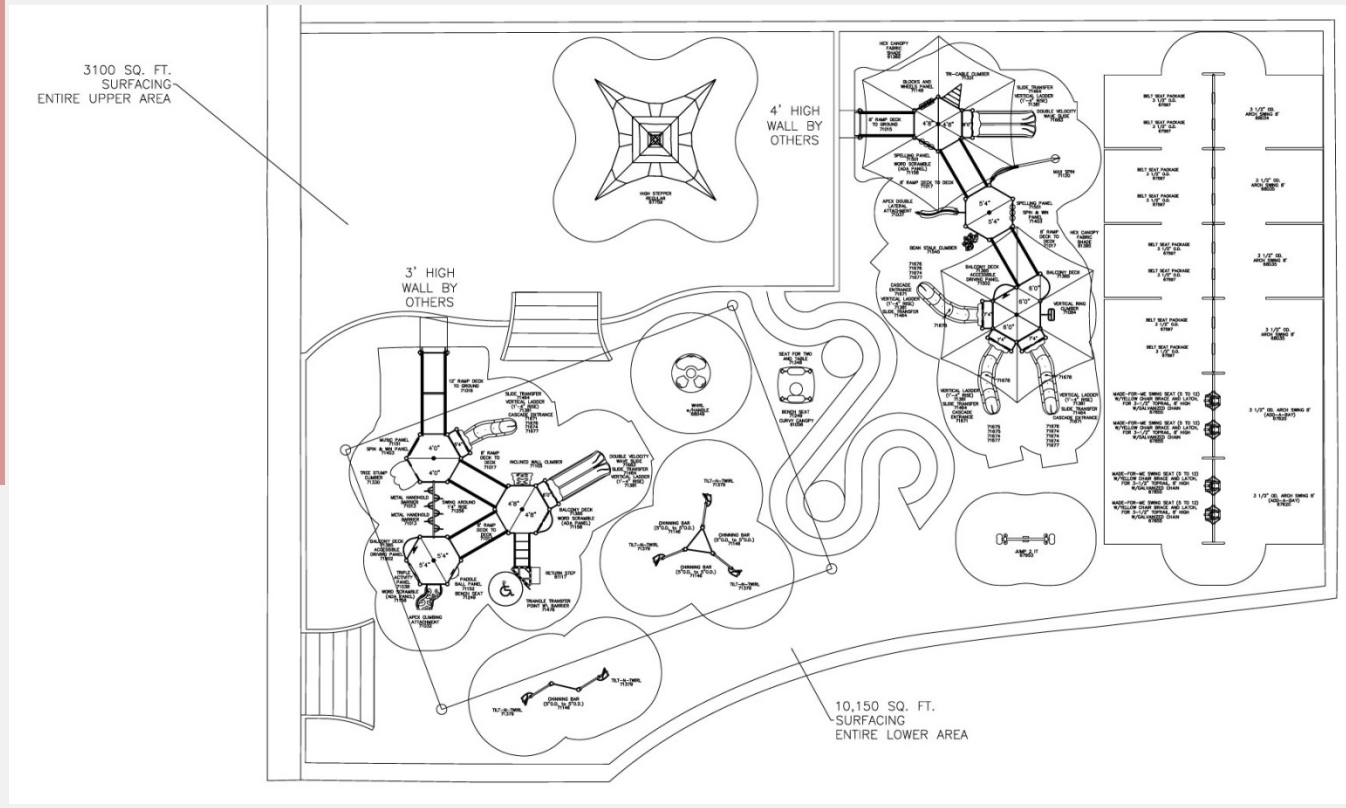
Valerie Jorgensen (Parent)  
Angelique Sanderson (Parent)  
Matthew Wernli (Parent)  
Theresa Torelli (Parent)  
Jeremy Trimble (M&O)  
Laura Santos-Farry (Safety & Risk)  
(3) BCE Students

# New Playground.



## Barton Creek Elementary School

03



Concept #1

# *New Playground.*



## Barton Creek Elementary School

03



play&park  
structures  
1.800.727.1907  
www.playandpark.com

play&park  
structures  
1.800.727.1907  
www.playandpark.com

Concept #1

# New Playground.



## Barton Creek Elementary School

03



Concept #2



# *New Playground.*



Barton Creek Elementary School

03



Concept #2